

RB-EKEN 16

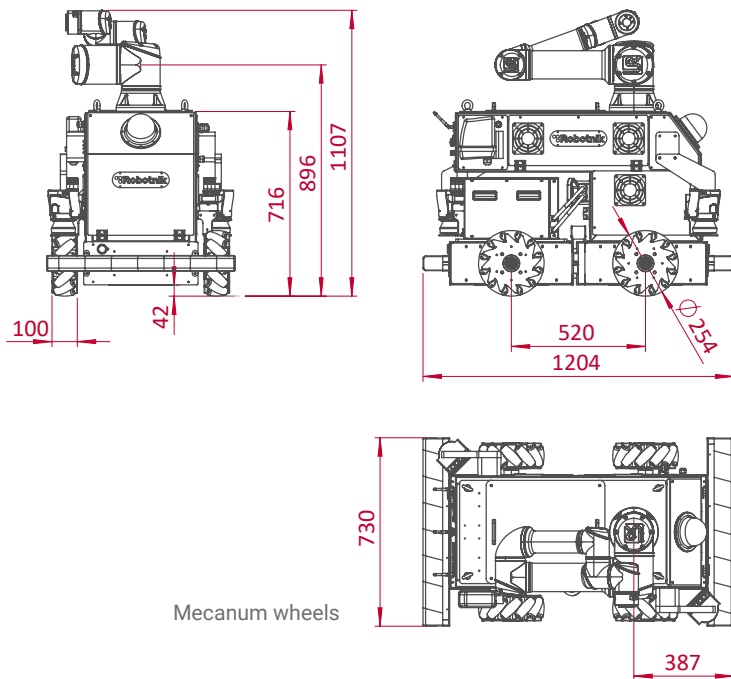


COMPLETELY INTEGRATED
**COLLABORATIVE MOBILE
MANIPULATOR (CMM)** FOR
INDUSTRIAL TASKS

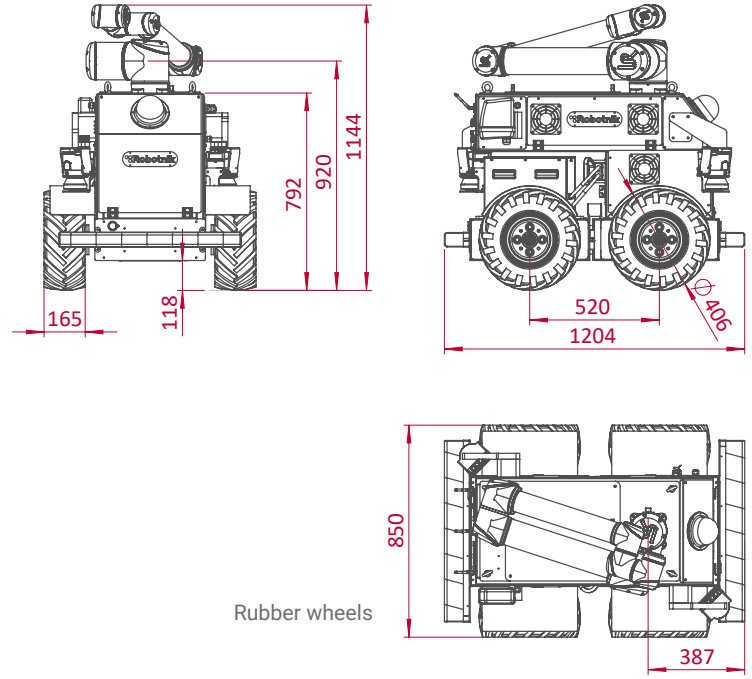
INDUSTRIAL MOBILE MANIPULATION

- PICK & PLACE
- LOADING / UNLOADING
- POSITIONING OF WORKPIECES
- ASSEMBLY
- SCREWING
- DRILLING / MILLING
- INSPECTION AND CHECK





Mecanum wheels



Rubber wheels

TECHNICAL SPECIFICATIONS

MECHANICAL

Dimensions **1.204 x 730 x 1.107 mm (Folded)**
(mecanum wheels)

Weight **284 kg**

Payload **300 kg**

Speed **2 m/s**

Environment **Indoor/Outdoor**

Autonomy **4 h continuous motion**

Batteries **LiFePO₄ 60Ah@48V**

Motors **4 x 1,2 kW**

Temperature range **0° to +40°C**

Max. slope **60 % (with outdoor wheels)**

CONTROL

Controller **Open architecture ROS
Integrated PC with Linux**

Communication **WiFi 802.11n**

Connectivity **RJ45, USB, HDMI**

ARM

Weight **33,1 kg**

Payload **16 kg**

Reach **900 mm**